

TRAVIS COURT

APARTMENTS




TRAVIS COURT

APARTMENTS

Charles Louis Homes are delighted to market this superb new development of ten apartments in the prestigious and semi-rural Heywood Old Road area of Middleton.

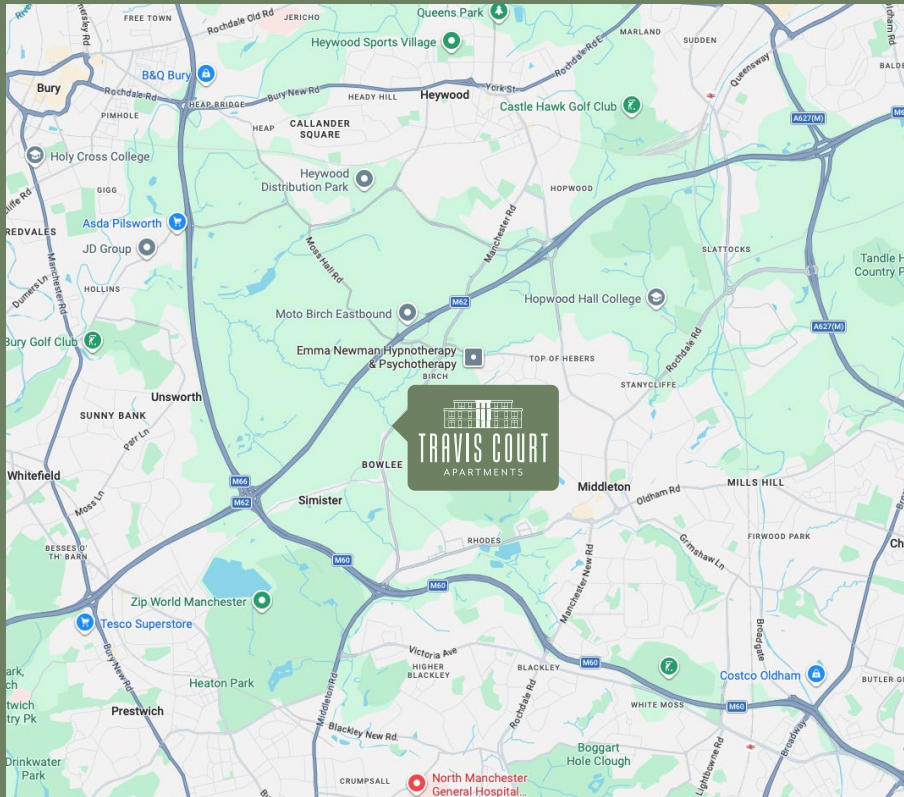
Designed and finished to the very highest standard by Atbrook Estates, these apartments boast the ideal combination of countryside location, great access to local amenities and a short commute to Manchester City Centre.

Two spacious and luxurious penthouse apartments adorn the top floor, providing a beautiful living space and spectacular views of the surrounding area. Four beautifully proportioned modern luxury apartments sit on the first floor of this stunning building. The ground floor consists of the same

exceptional design and finish as the first floor, with the added advantage of a spacious outdoor private patio area. A serviced elevator provides access to the first-floor apartments and penthouse suites.

Travis Court sits in its own manicured grounds, with communal outdoor leafy green space at the rear and side of the building and a covered communal patio area. With resident's car parking and landscaped features to the front, modern outdoor lighting provides illumination for walkways and car park.





342 HEYWOOD OLD ROAD, MIDDLETON, M24 4QG

Travis Court is superbly situated on Heywood Old Road, within a few minutes' drive of both the M60 and M62, set in a picturesque, semi-rural landscape.

The commute time to Manchester centre is between 20 and 30 minutes and the surrounding historic market times of Bury, Rochdale, Middleton and Oldham are within easy reach.

For health and fitness enthusiasts Travis Court is within a few steps of the David Lloyd Leisure Club and the parks at Bowlee are comfortably accessible on foot. Golfers are well catered for with the Bowlee Driving Range the length of a good 4 iron away. and the highly respected North Manchester Golf Club a leisurely 10-minute drive.

Within walking distance of the popular White Hart public house, Travis Court is ideally placed for a variety of lifestyles. Whether it is a leisurely pace of life you are looking for, an excellent base from which to commute into the heart of Manchester, or an ideal environment for a home working arrangement, then Travis Court's outstanding location and surrounding amenities are sure to go beyond the new owners expectations.



GROUND FLOOR APARTMENTS

A1 – A4



2 Double bedrooms



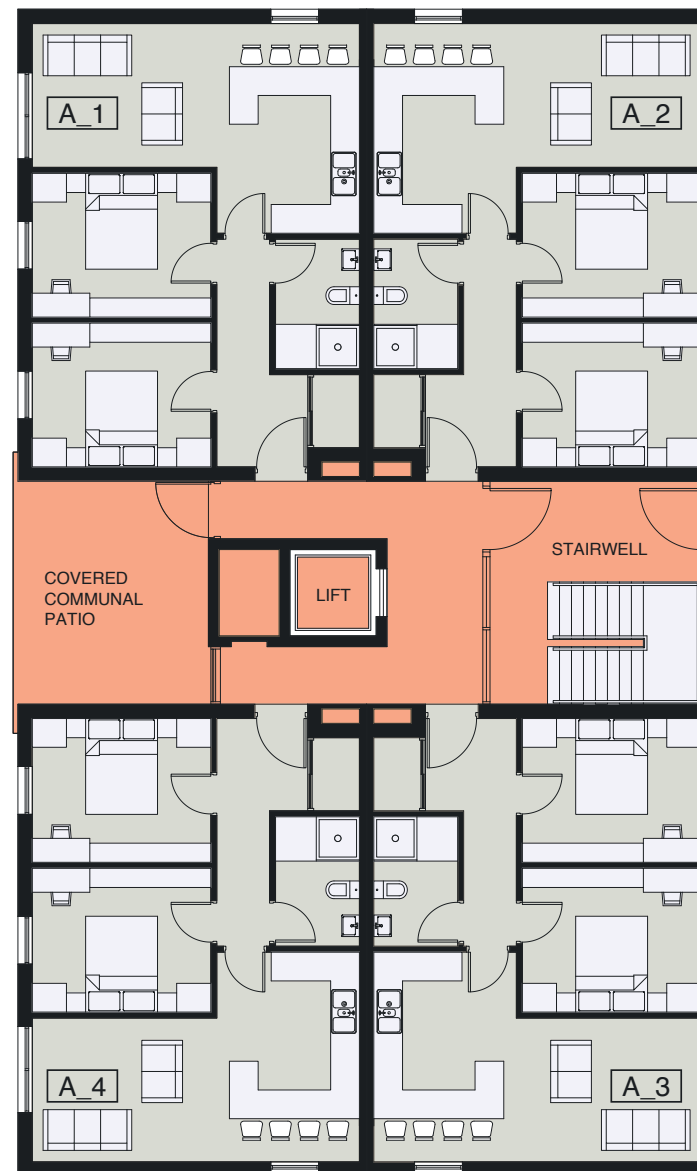
675 sq ft

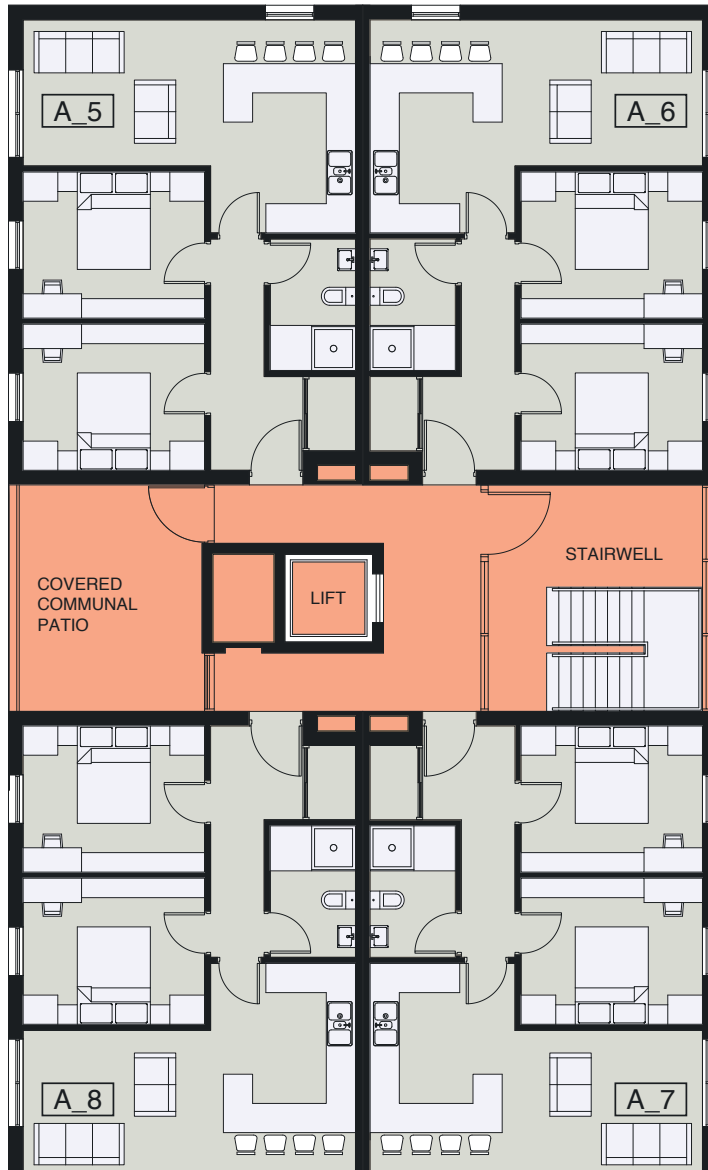
Exceptionally well-designed residencies await the new owners of an apartment on the ground floor of Travis Court.

With two double bedrooms, a spacious shower room and kitchen living area with French doors to the private patio area, these outstanding modern apartments offer ground floor living with access to private and communal outdoor living space.



A2 & A3 - £275,000, A1 & A4 - £265,000





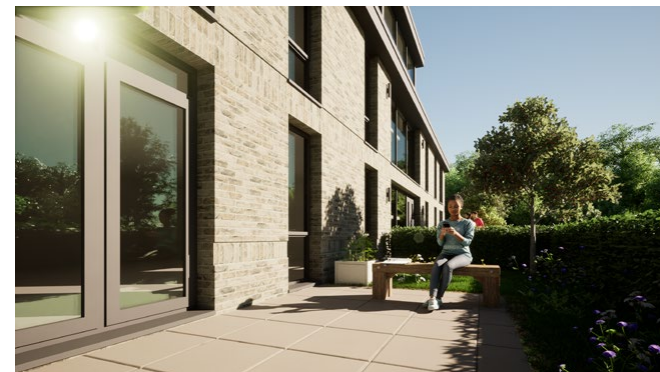
FIRST FLOOR APARTMENTS

A5 – A8

-  2 Double bedrooms
-  675 sq ft
-  £250,000

Accessed via the lift or the stairway, the first-floor apartments at Travis Court offer the modern design and finish present throughout the development.

With two double bedrooms, a spacious shower room and a kitchen living area with breakfast bar, these outstanding modern apartments are finished to the highest standard and sit beautifully in the enclosed and leafy private gardens with communal outdoor spaces.





PENTHOUSES

A9 – A10



2 Double bedrooms



835 sq ft



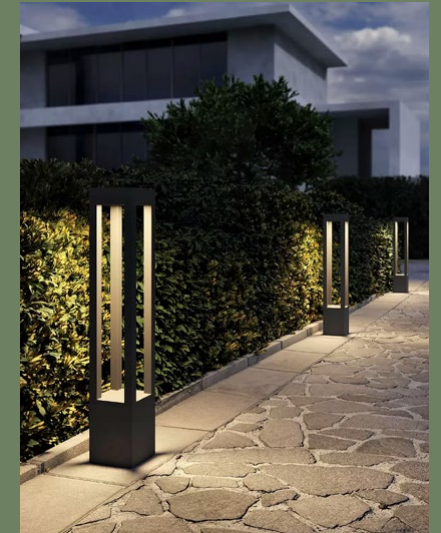
POA

The two penthouses at Travis Court are further evidence of the outstanding modern design and build quality.

Boasting two large double bedrooms, a substantial shower room and a spacious living, kitchen and dining area with access to the private outdoor space, the penthouses will delight the new owners.

Accessed via the lift or the stairway and commanding spectacular views of the surrounding area to both the front and rear, both of the penthouses at Travis Court are expected to be in high demand.





General

- Integrated Freeview and Sky TV reception system
- Individual apartment intruder alarm system
- Secure access entrance control system
- LED integrated lighting
- Grey oak parquet laminate flooring

Kitchen

- Appleton designer fitted kitchen
- Solid quartz worktops
- Bosch, NEFF and Siemens appliances

Bathrooms

- Fully tiled
- Separate bath and shower
- Integrated WC and vanity unit
- Brushed brass accessories
- Concealed thermostatic valve, rainwater shower head & handset
- Overflow Bath Filler
- Electric Towel Rail

External

- Landscaped gardens and planting
- Communal outdoor patio
- Allocated parking
- Garden, car park and pathways lighting system

All pictures are visual representatives of the final development. All details are correct at time of publication, please check with Charles Louis Homes for any individual housing specification changes.

TO ARRANGE A VIEWING AND FOR MORE INFORMATION CONTACT CHARLES LOUIS HOMES ON 0161 959 0166 OR EMAIL ENQUIRIES@CHARLESLOUIS.CO.UK



TRAVIS COURT

APARTMENTS

TO ARRANGE A VIEWING AND FOR MORE INFORMATION CONTACT:



CHARLES LOUIS
HOMES

Office 0161 959 0166

Mobile 07702 017029

Email enquiries@charleslouis.co.uk

Visit 4 Bolton St, Ramsbottom, Bury BL0 9HX

www.charleslouishomes.co.uk