

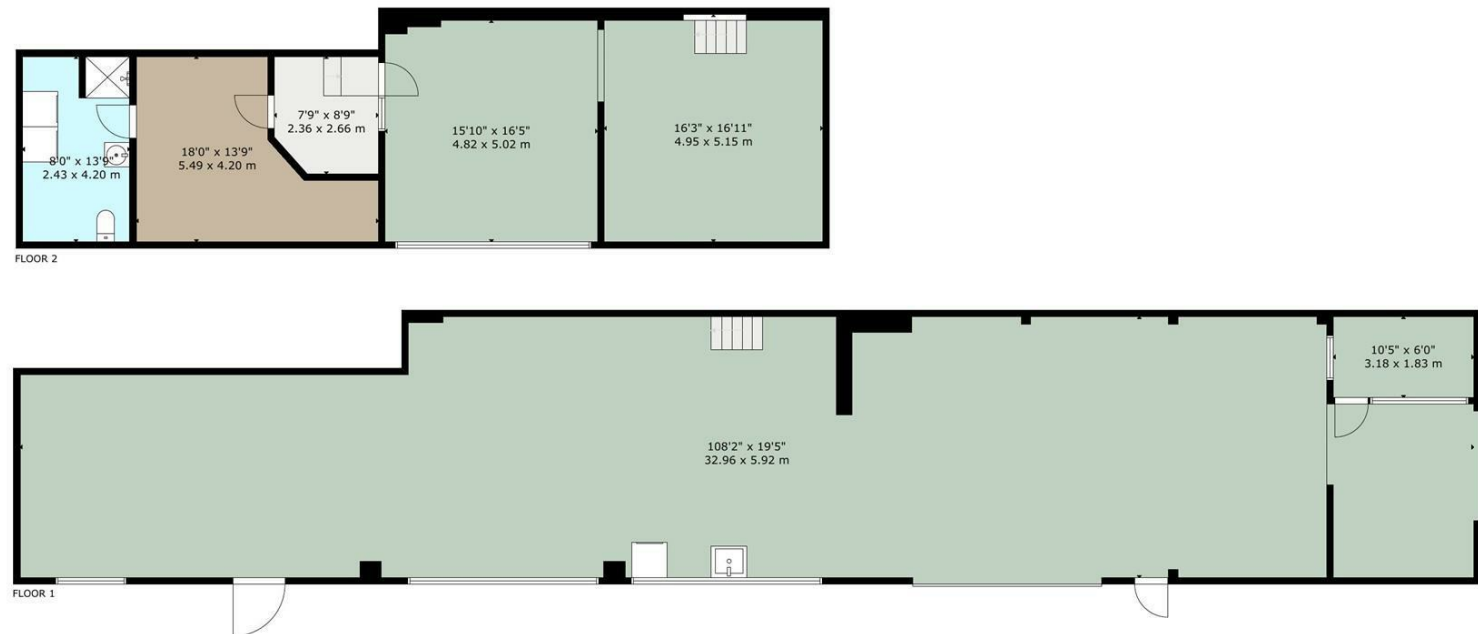


Charles Louis Homes Ltd
4 Bolton Street
Ramsbottom
Bury
BLO 9HX

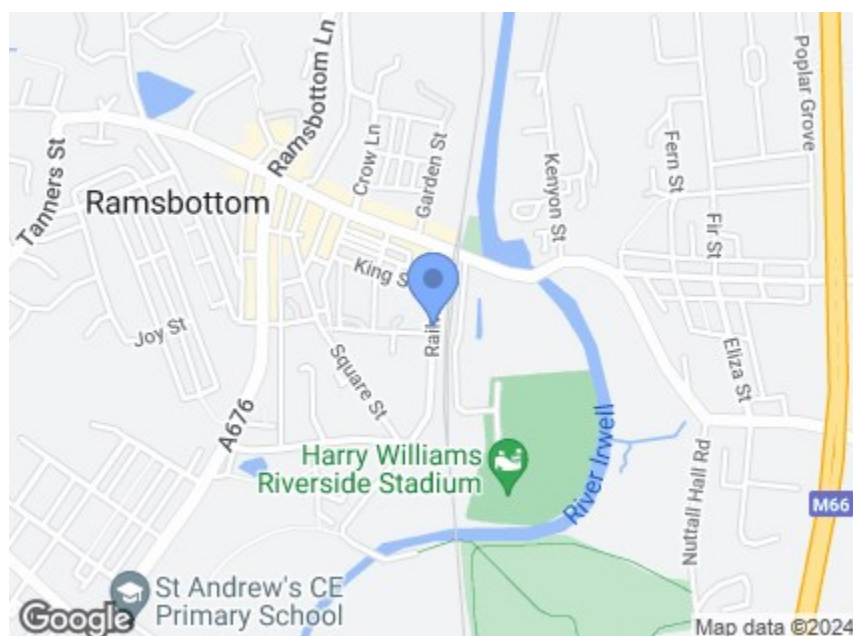
CHARLES LOUIS

HOMES LIMITED

E propertyenquiries@charleslouis.co.uk
T 0161 959 0166
www.charleslouishomes.co.uk



GROSS INTERNAL AREA
TOTAL: 267 m²/2,881 sq.ft
FLOOR 1: 183 m²/1,974 sq.ft, FLOOR 2: 84 m²/907 sq.ft
SIZE AND DIMENSIONS ARE APPROXIMATE, ACTUAL MAY VARY



Directions

From our central Ramsbottom office head east on Carr St towards Bolton St/A676 and continue onto Bridge St. Turn right onto Railway St and then right onto Irwell St. Destination will be on the left



Railway Street

Ramsbottom, Bury, BL0 9AL

Guide price £190,000



- Commercial property for sale
- Property set over two levels
- Currently a metal fabrication business
- Total square footage is 2881 sqft
- Tenant ready to move in
- Would suit redevelopment (subject to planning)
- Located in the heart of Ramsbottom
- Viewing is available immediately

These particulars, whilst believed to be accurate are set out as a general outline only for guidance and do not constitute any part of an offer or contract. Intending purchasers should not rely on them as statements of representation of fact, but must satisfy themselves by inspection or otherwise as to their accuracy. No person in this firm's employment has the authority to make or give any representation or warranty in respect of the property.

Tel: 0161 959 0166

www.charleslouishomes.co.uk

Railway Street

Ramsbottom, Bury, BL0 9AL

****COMMERCIAL WORKSHOP/UNIT FOR SALE**AVAILABLE NOW****

Charles Louis Commercial are pleased to bring to the market a well presented commercial unit, previously a metal works. Available to let in the town centre location of Ramsbottom with tenant ready to move in.

The property has access via two roller shutter doors plus door access to office area.

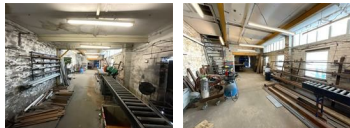
The property is set over 2 levels and is approximately over 2881 SqFt, across the two floors,

The property sits in a small complex with other well regarded business,

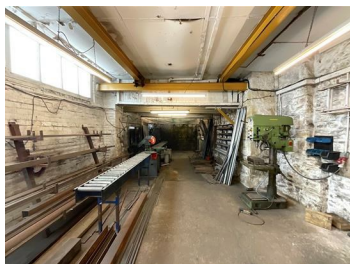
1.



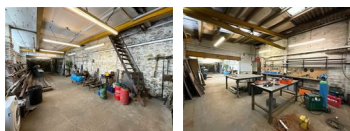
2.



3.



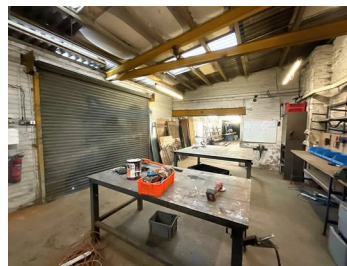
4.



5.



6.



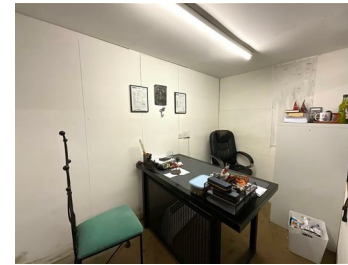
7.



8.



9.



10.



11.