

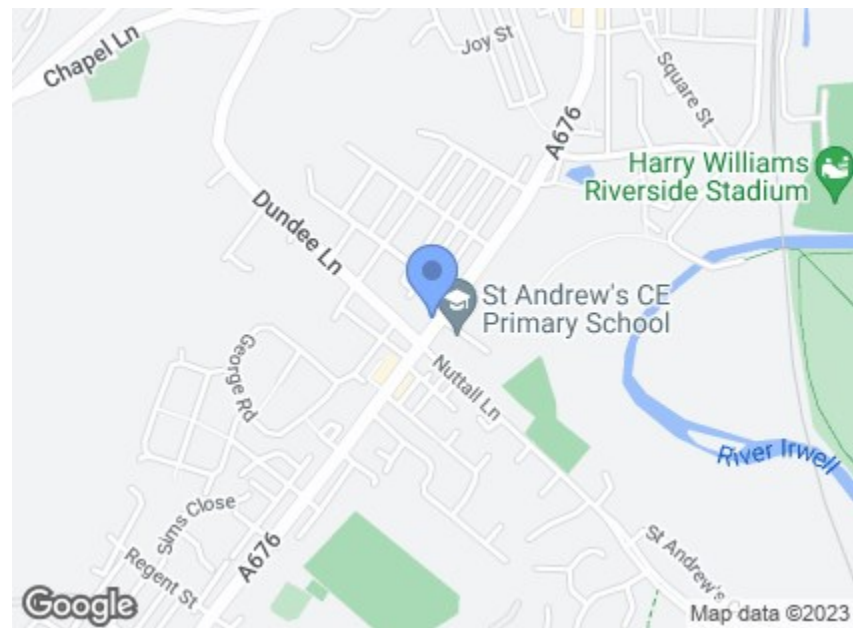


CHARLES LOUIS

COMMERCIAL

Charles Louis Commercial
4 Bolton Street
Ramsbottom
Bury
BL0 9HX

Email: enquiries@charleslouiscommercial.co.uk
Phone: +44 161 959 0166
www.charleslouiscommercial.co.uk



Directions

Location The discussed property is situated on Bolton Street in Ramsbottom, Greater Manchester. Ramsbottom is a busy hub of independent shops, such as cafes, bars and restaurants with a attractive draw for residential interest. Bolton Street is one of the major roads coming into Ramsbottom. The A56, linking the town with M66, M60 and M56 Main motorways highlights the prime location for commuting to Manchester city centre, Blackburn and beyond.

Becky P's Bakery, 204 Bolton Street Ramsbottom, Bury, BL0 9JE

£15,000

- Well Established Family Bakery
- May Suit First Time Buyers
- Approximately Half A Mile From The Centre Of Ramsbottom
- Great Potential To Develop The Business
- Located On A Busy Commuting Road
- EPC - C

These particulars, whilst believed to be accurate are set out as a general outline only for guidance and do not constitute any part of an offer or contract. Intending purchasers should not rely on them as statements of representation of fact, but must satisfy themselves by inspection or otherwise as to their accuracy. No person in this firms employment has the authority to make or give any representation or warranty in respect of the property.

Becky P's Bakery, 204 Bolton Street

Ramsbottom, Bury, BL0 9JE

Charles Louis Commercial Agents are pleased to be working closely with the current owners in seeking a buyer of this excellent opportunity, a long standing high street bakery on the outskirts of Ramsbottom Centre, Becky P's.

Thanks to the attractive asking price, this will be ideal for both either a first time buyer looking for a new venture, or indeed an experienced independent bakery operator chain planning on expanding their business portfolio.

Becky P's is sold with an existing ground floor lease, along with all fixtures and fittings, ready to trade and develop the bakery. Currently working on a 6 day week, custom is generated thanks to existing reputation, word of mouth and passing trade through footfall, being on a main road leading into the heart of Ramsbottom.

Business;

We understand the business in generating an average of £850 per week and accounts are available to view after successful viewing and at the discretion of the owner, it is important to highlight there has been no active advertising campaigns done for business development and there is no online presence giving the incoming buyer lots of scope for expanding.

Reason For Sale;

Our client is selling due to family commitments and seeking a change in career path.

Please contact Anthony Meadowcroft on 0161 959 0166 for all enquiries.

Approximate Dimensions outlined as guidance;

Serving Area 13.81 x 15.19 (209 Sq Ft)

Preparation Area: 35.95 x 15.29 (549 Sq Ft)

W/C: 2.84 x 4.56 (12 Sq Ft)

Sink & Cloak Room: 3.19 x 3.81 (12 Sq Ft)

Total Approximate: 782 Sq Ft

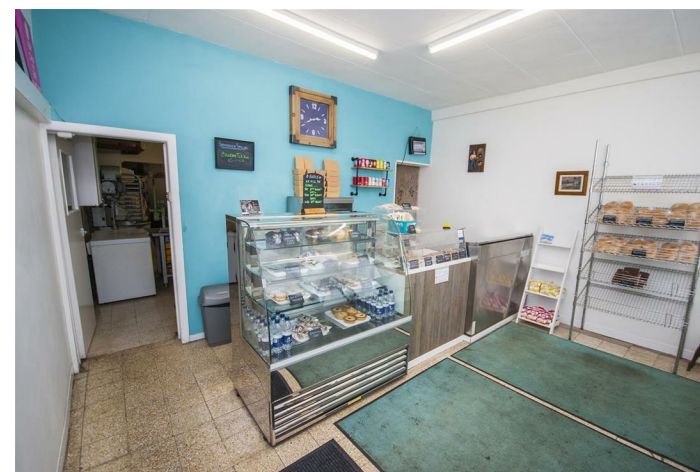
External 1



External 2



Internal 1



Internal 2



Internal 3



Internal 4



Internal 5

